



AL-NOOR

3 BHK & 4BHK APARTMENTS & COMMERCIAL SPACES
BROCHURE

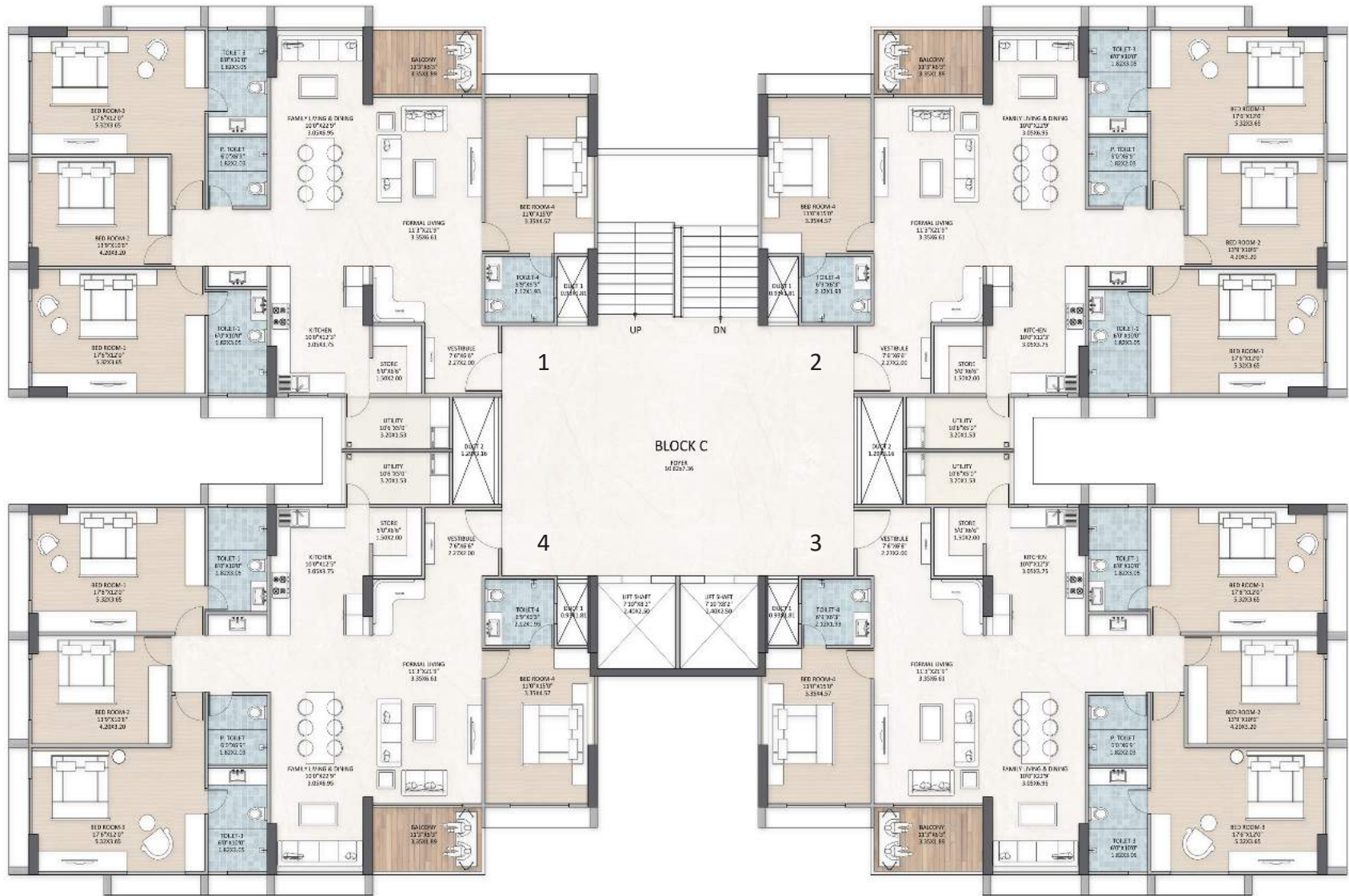
RERA REGISTRATION NO: PR/GJ/AHMEDABAD/AHMEDABAD CITY/AUDA/MAA12442/131023



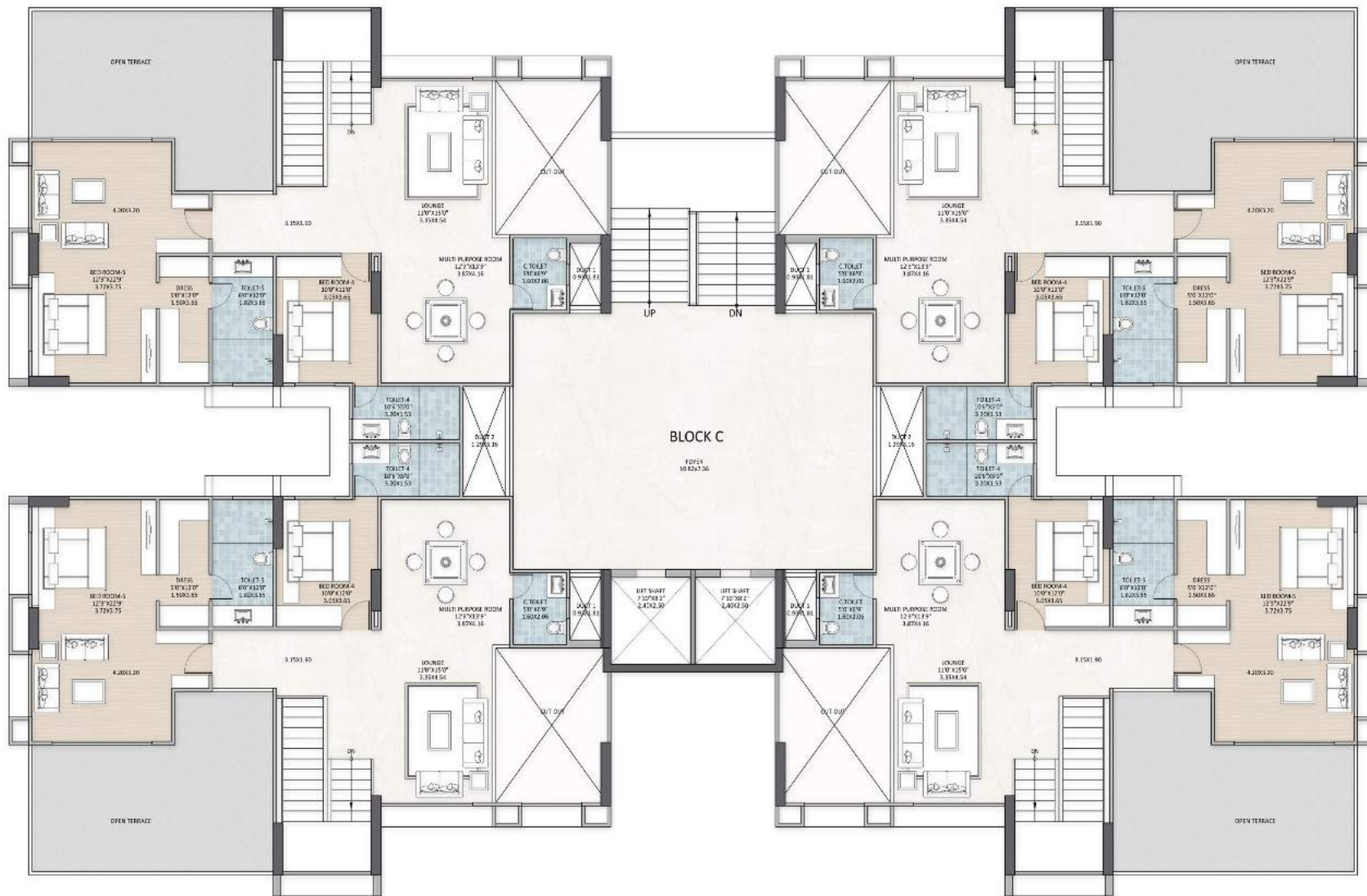
FIRST FLOOR PLAN



CLUSTER PLAN - A & B BLOCK- 3BHK



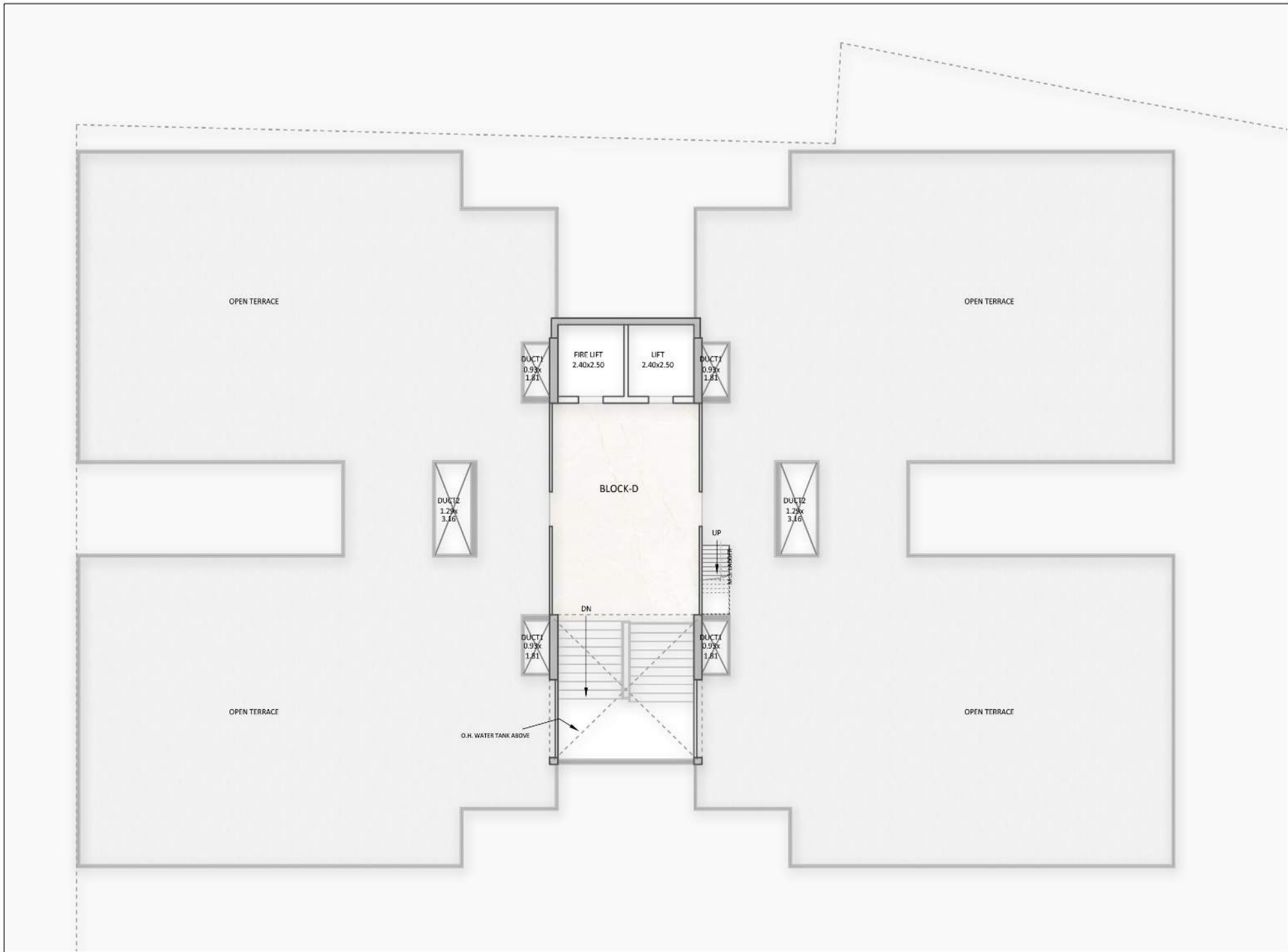
CLUSTER PLAN - C BLOCK- 4BHK



CLUSTER PLAN - C BLOCK- 4BHK - 14TH FLOOR



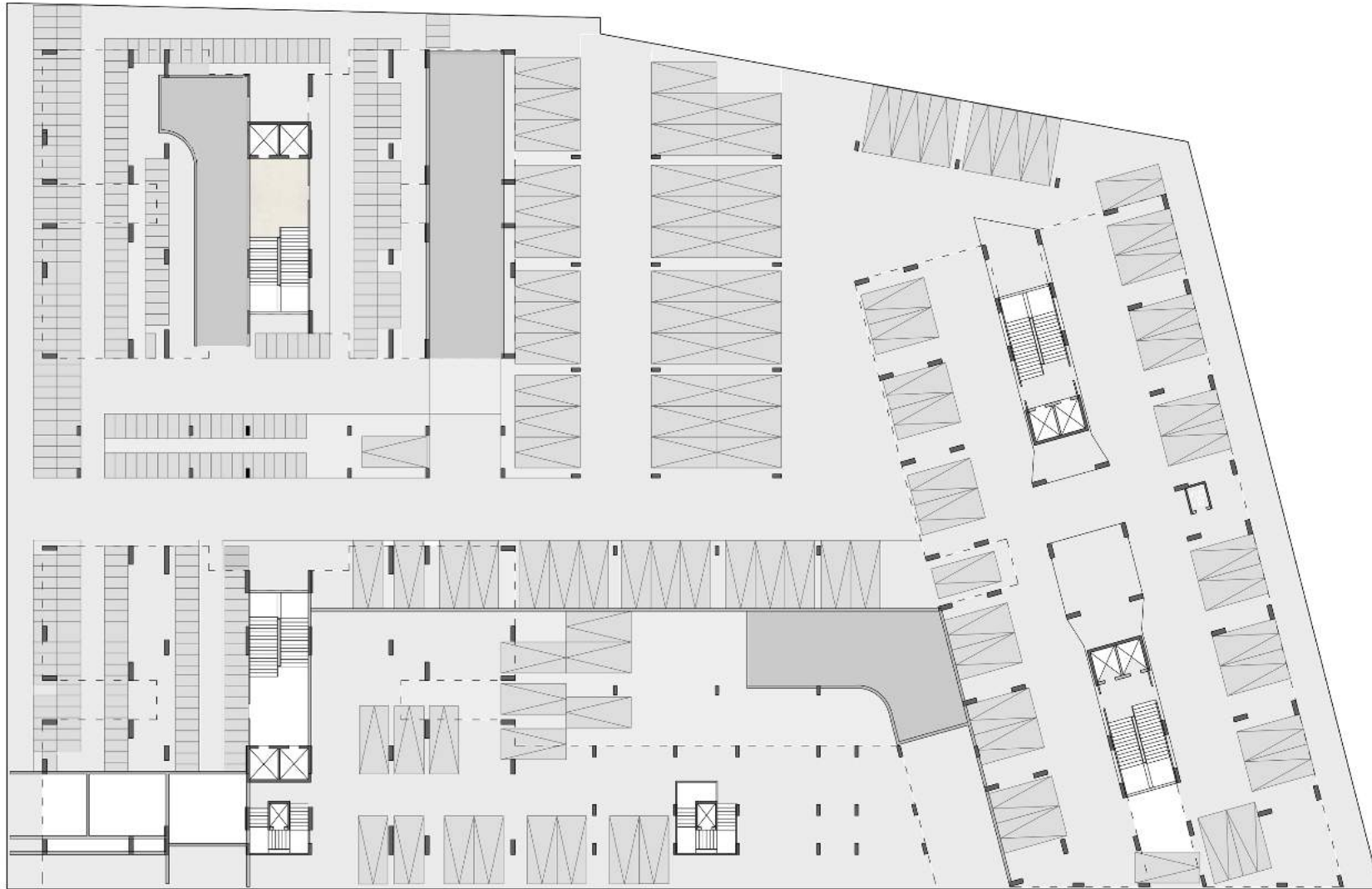
CLUSTER PLAN - D BLOCK- 4BHK



TERRACE PLAN - D BLOCK



TERRACE PLAN - A+B+C BLOCK



BASEMENT - 1 PLAN



BASEMENT - 2 PLAN

RESIDENTIAL

Salient Features -

- Lush Green Developed Garden with Club House.
- Automatic Elevators with Elegant Foyer in Each Block.
- Air-conditioned Gymnasium & Indoor Games Room.
- Children Play Area & Multi-Purpose Court.
- Round the Clock Security Service.
- School Bus Drop - off Zone.
- Walking Track.

Specifications -

- **Wall finish** : External double coat sand face plaster with tex/acrylic paint. Internal single coat finished plaster with cement base lapi finish.
- **Flooring** : Vitrified tiles flooring. Wooden flooring in master bedroom.
- **Electrification** : Concealed three phase electrification with adequate points as per architect's design. A.C.points in all bedrooms and living room. standard quality wire & MCB boards & Switches.
- **Doors** : Masonite skin panel doors with wooden frame
- **Windows** : Anodized OR Powder Coated Aluminium windows with MS safety grill (As per Architect Design) and natural stone jambs.
- **Bathrooms** : Glazed tiles flooring with colored glazed tiles dado up to 6'6" level. Standard quality C.P. fitting and sanitary ware.
- **Kitchen** : Granite platform with 4' glazed tiles dado. Glaze tiles under platform D.P. polishKotata stone shelves and glazed tiles dado in store rooms glazed tiles dado in wash area.
- **Water supply** : Common tube well with under ground water tank and over head water tank for 24 hour water supply.
- **Road** : Internal roads with interlock blocks or stone and street lights.
- **Common plot** : Well developed common plot with lush green garden, children play area, parking, landscaping, water bodies and foundation & Sitouts.
- **Treatments** : Antitermite treatment at parking level and water proofing treatment at terrace level.

COMMERCIAL

Salient Features -

- Ample parking spaces (Open Parking & Basement)
- Automatic Elevators exclusively for commercial use.
- Round the Clock Security Service.

Specifications -

- **Finish** : Outside double coat plaster with acrylic paints or elevation as per architect's design. Front elevation as per architect's design.
- **Flooring** : Vitrified tiles flooring in all showrooms
- **Electrification** : Power Supply with concealed wiring standard quality wire board & switches.

સુગર
INDRAPRASTH BUSINESS PARK



SARKHEJ POND

AL-BUROJI

CRESCENT SCHOOL

DARIGAH MASTAN BABA

NAYARA PETROL BUNK

SARKHEJ-JUHAPURA NATIONAL HIGHWAY

SARKHEJ-JUHAPURA NATIONAL HIGHWAY

KANZUL IMAN
MAZID
DWAITEBLAW

સુગર

LODGE ROAD

AMNIA

Developer:



M/S P.M. REALITY
Office Address:- "AL NOOR" 60ft. T.P. ROAD,
F.P. No 80, T.P.No 85, Opp City Pulse Cinema
(Old sungam cinema)
Sarkhej, Ahmedabad - 382210
Phone:- +919909019330

Architects:



Hiren Patel Architects
P-4, "Satkut Tower", Parth Sarthi Avenue,
Tr. Shyamal Row House - II,
Satellite, Ahmedabad - 380015
Phone:- +91-79-26767264 | 26752621

Structural Consultant:



Setu Infrastructure
NELSON MACWAN
Phone:- +91 9979965357

